



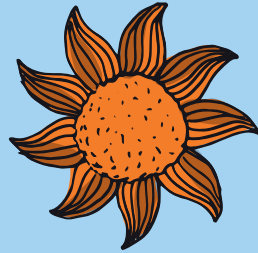
# OUR STRATEGY

sets out our aim to embed sustainability into all educational activities and services

The University's Carbon Management Plan target is to reduce our carbon by **43% by 2020**

## SMT

and the Sustainability Executive are responsible for setting our strategy

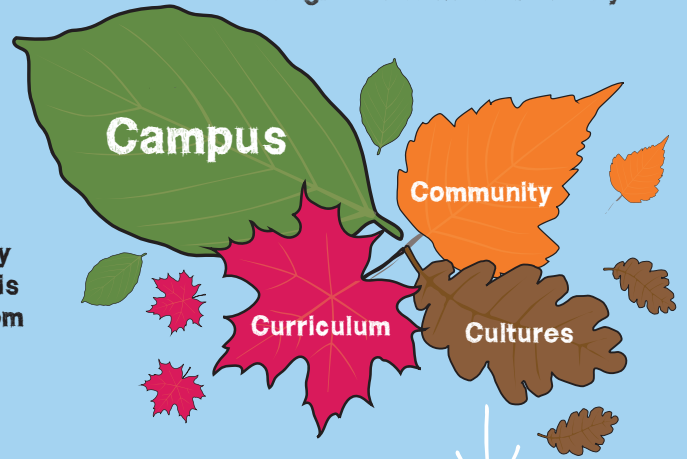


Strategic implementation is via four integrated themes of activity

We use our data to report on energy/carbon, water and travel for all campuses



**AIM 10%** of the energy we consume is generated from renewable sources



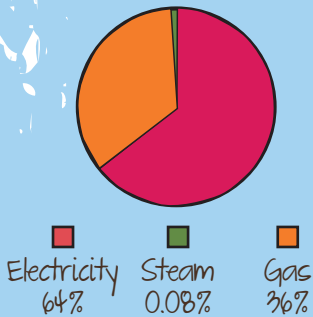
*Inform and Prioritise*

The lab

**MEASURES AND MONITORS** buildings energy consumption using data, software and helpdesk feedback

## THE ENERGY AND CARBON LAB

brings together surveyors, maintenance teams, premises managers and energy engineers to find and implement solutions



Healthy and happy buildings make happy customers, productive staff and students

The University is implementing an Environmental Management System



Integrate sustainability into design, procurement, construction as part of Estates Master Planning

Engaging and communicating through initiatives designed to genuinely engage staff and students in problem solving



We as staff and students can have the **BIGGEST** demand reduction impact for reducing energy consumption, through changing our behaviours



## AWARDS

We aim to achieve sector specific awards such as **Green Gown Awards**

